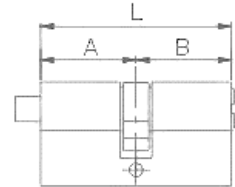


### Cylinder with Thumb Turn

REF: FE71001  
Material: Brass  
Finish: SNP



Reference	Length	A	B
FE71001/1	60mm	30	30
FE71001/2	65mm	30	35
FE71001/3	70mm	35	35
FE71001/4	80mm	40	40
FE71001/5	90mm	45	45
FE71001/6	100mm	50	50
FE71001/7	110mm	55	55
FE71001/8	120mm	60	60

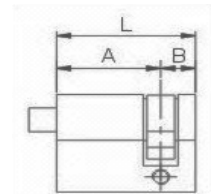


### Offset Cylinder with Thumb Turn (without Key Function)

REF: FE71004  
Material: Brass  
Finish: SNP



Reference	Length	A	B
FE71004/1	60mm	30	30
FE71004/2	65mm	30	35
FE71004/3	70mm	35	35
FE71004/4	80mm	40	40
FE71004/5	90mm	45	45
FE71004/6	100mm	50	50
FE71004/7	110mm	55	55
FE71004/8	120mm	60	60



### Turn Knob Designs and Dimensions

